

SCARC/CARC Field Day 2009

4H Building
Iowa State University Campus
Ames, IA

Class 2F
W0YI
W0ISU (GOTA)

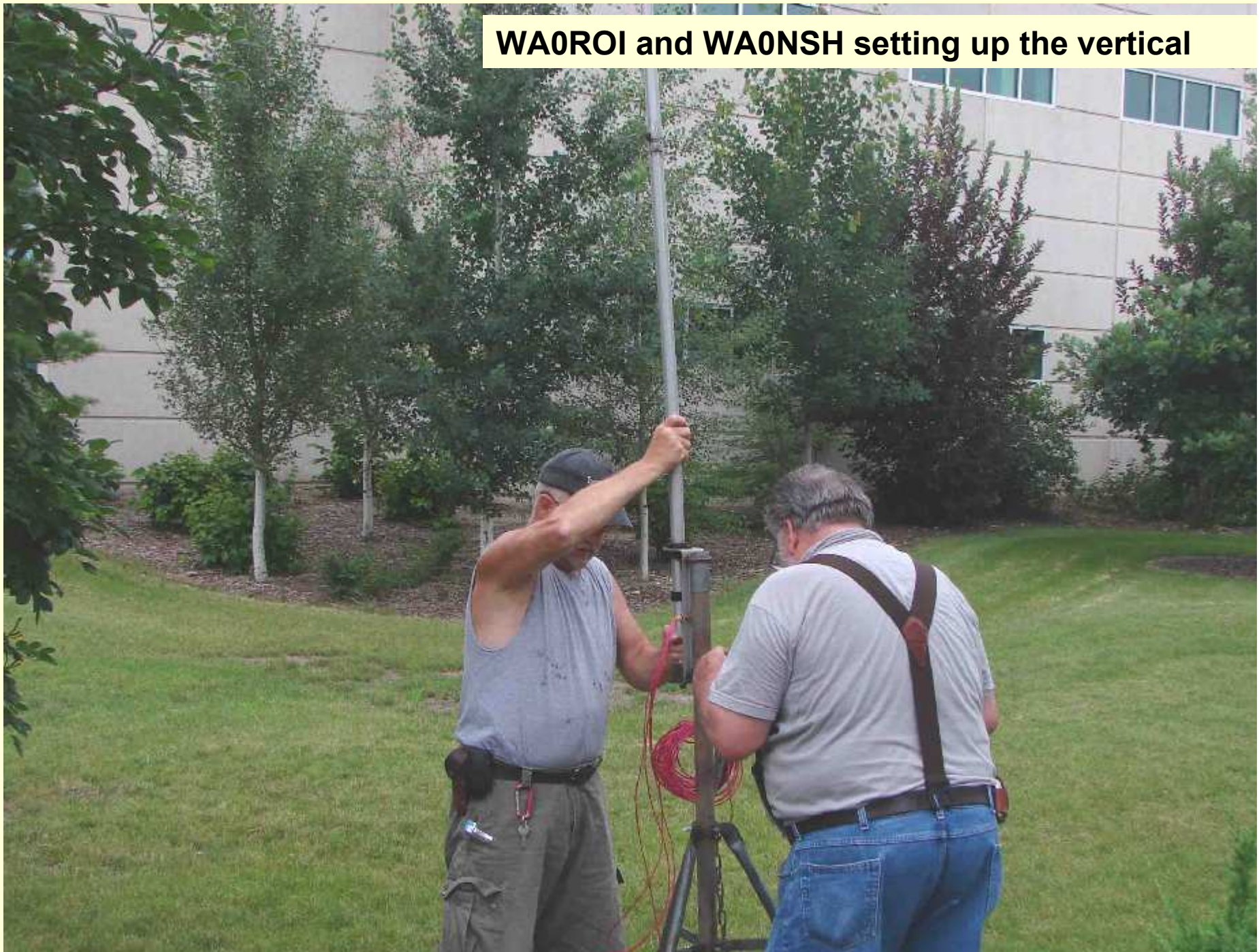
Overview

- Installing antennas
- GOTA station
- Extra activities
- East (SSB/RTTY) station
- West (CW) station
- Results
- Suggestions for 2010 SCARC/CARC FD

WA0ROI setting up the vertical



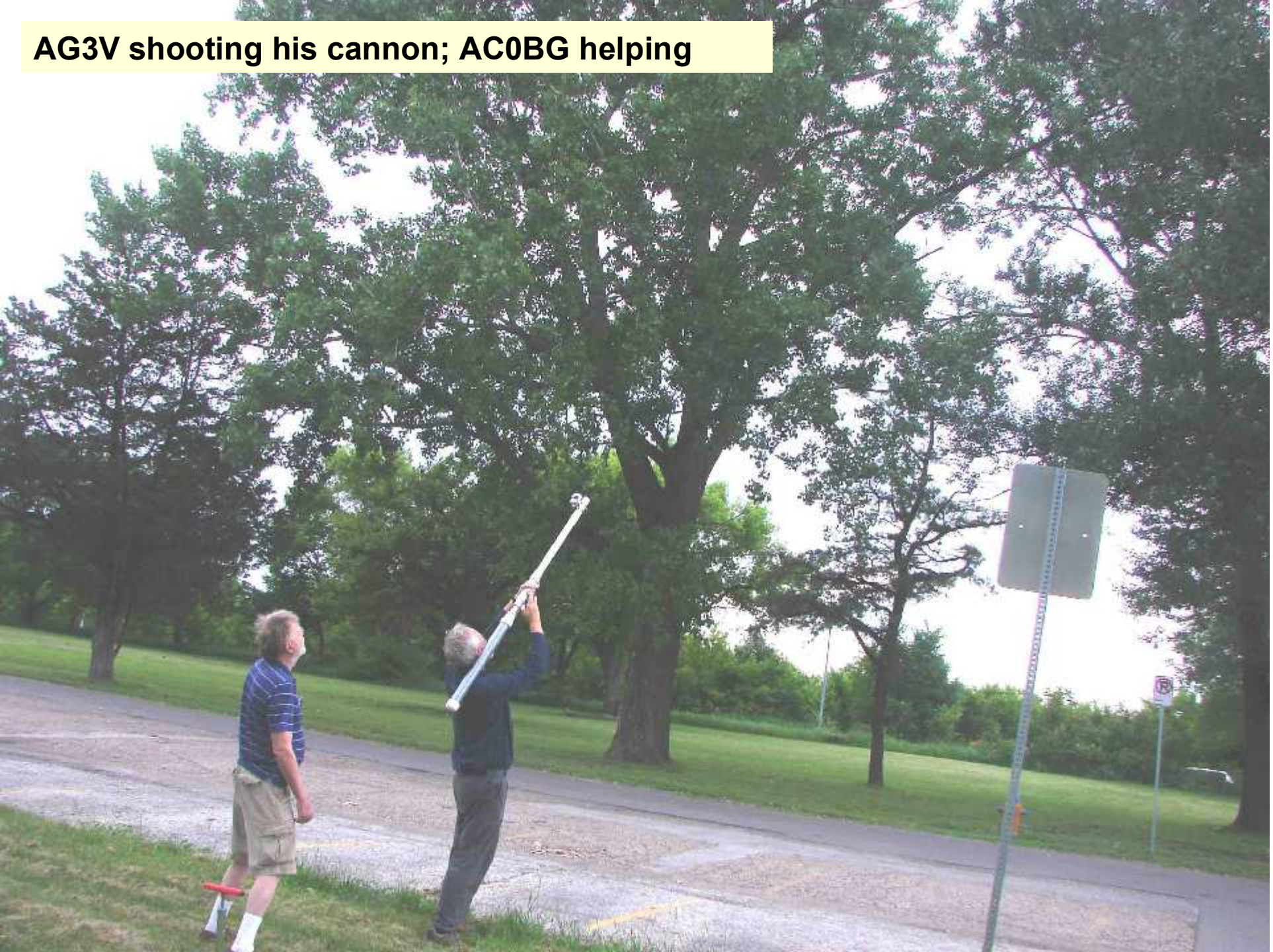
WA0ROI and WA0NSH setting up the vertical



Multiband vertical ready for use



AG3V shooting his cannon; AC0BG helping



WA0NSH doing a repair





KI0Q assembling the Rohn 25 sections

Support for the 40-foot tower



KI0Q installing the rotator and Tribander



West station Tribander



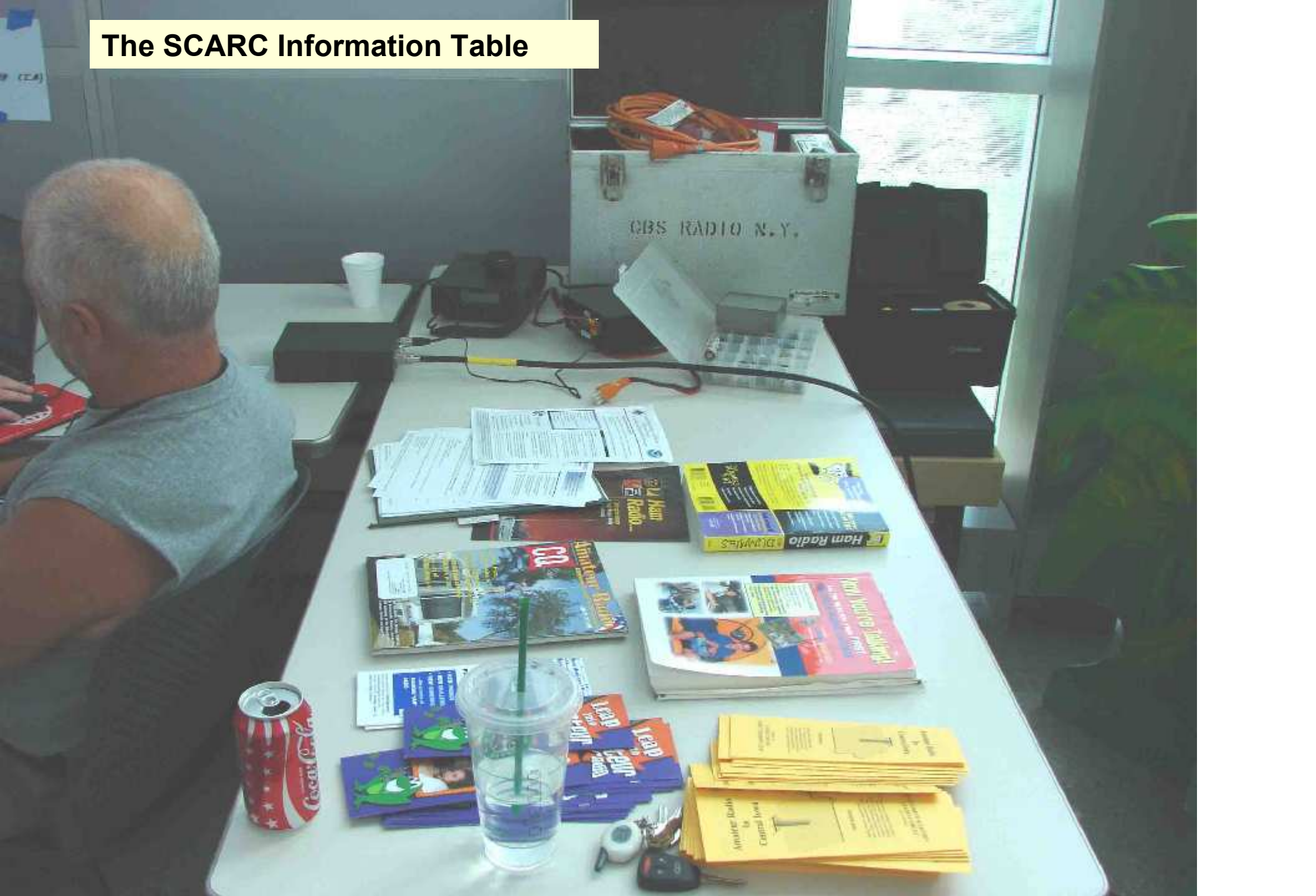
**Adjusting the 80-meter dipole
for the East station**



WA0ROI checking out the generato



The SCARC Information Table



WA0ROI coaching a GOTA operator





AG3V coaching GOTA operators

N0CFL at the GOTA station



The Boy Scout radio merit badge class studying



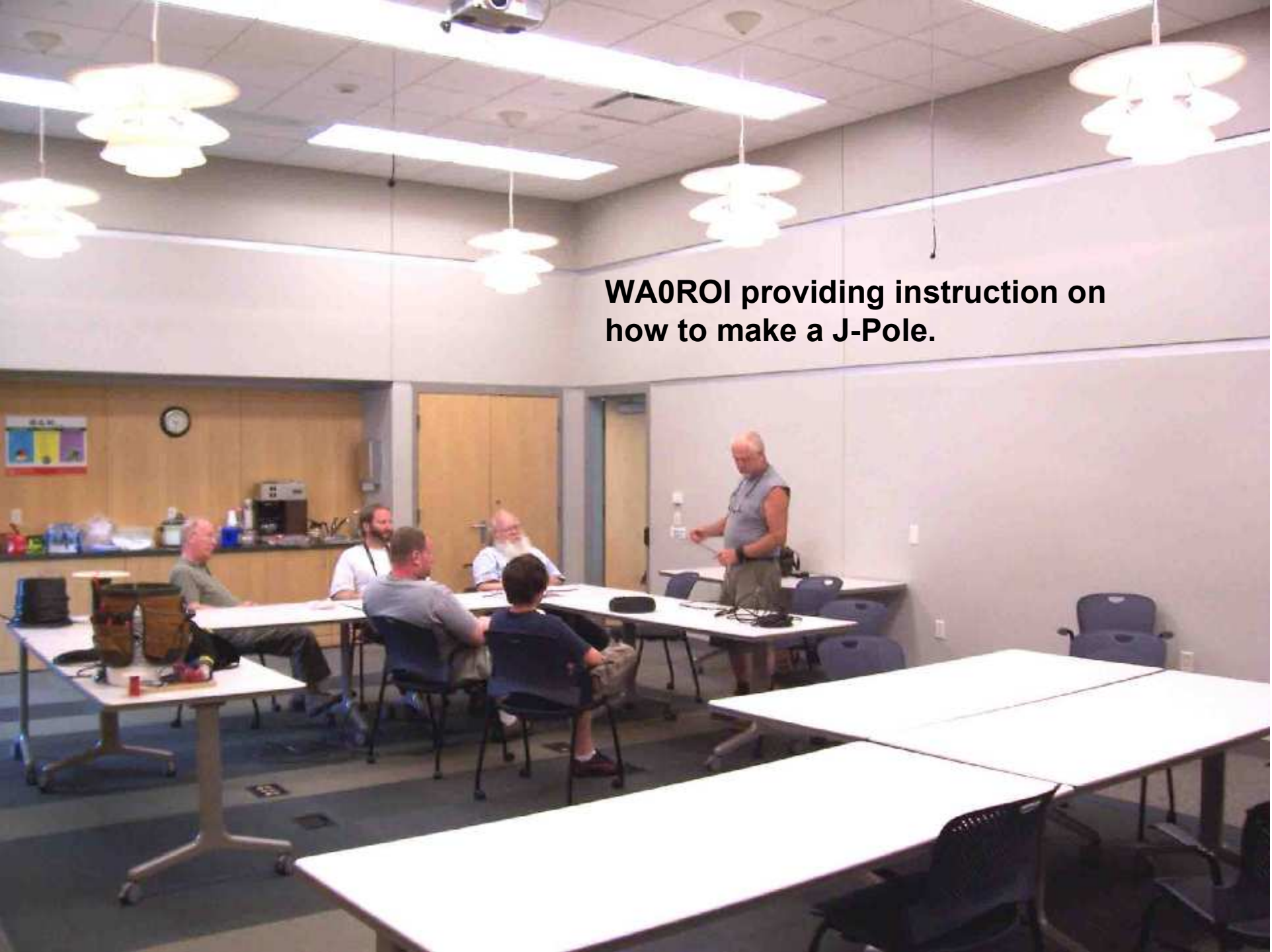
KN0R's satellite communications system



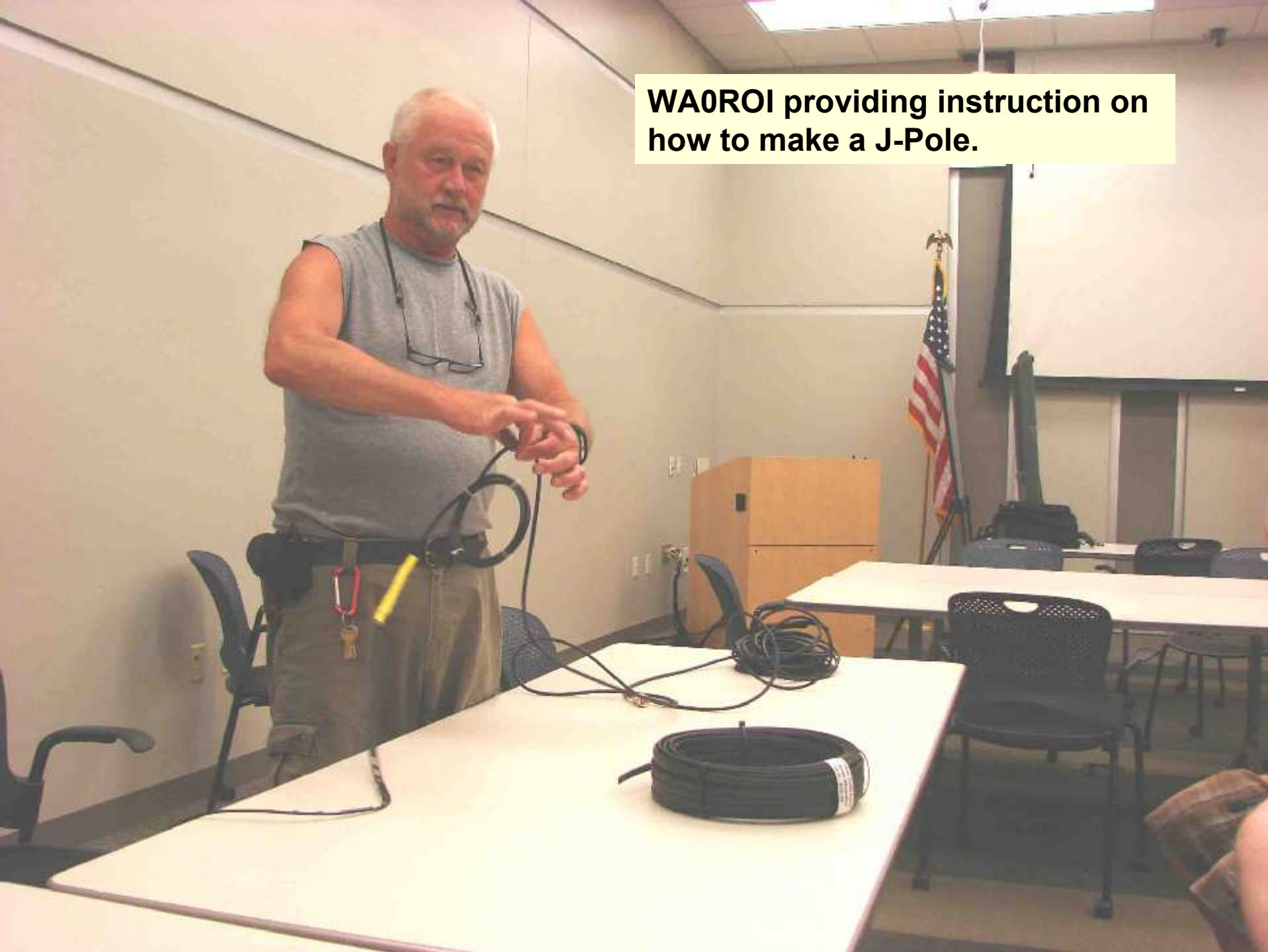
KN0R's computer tracking a satellite



WA0ROI providing instruction on how to make a J-Pole.



WA0ROI providing instruction on how to make a J-Pole.



Freida's cookies and Sloppy Joe's



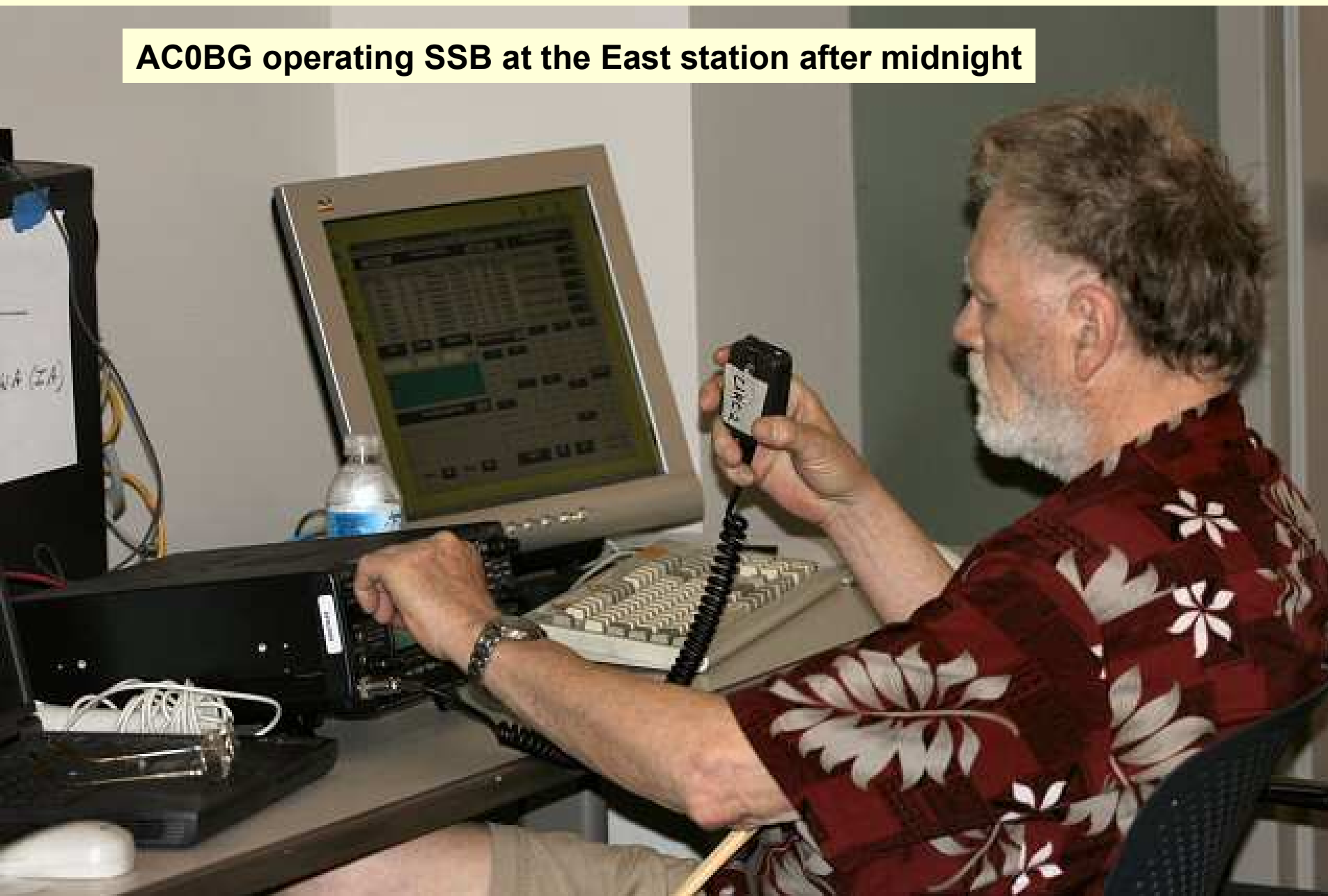
KB7VML at the East station, running RTTY



AI1P operating, N0NRO logging



AC0BG operating SSB at the East station after midnight



AD0H operating CW West station



K0NJ operating CW with AD0H logging while Boy Scouts and N0HR observe



K0NJ operating CW with AD0H logging while N0HR observes



N0HR operating 20 meter CW



CW log on the West station Saturday evening

NSFJP's Field Day Network Log 2.5

File Options Setup Band Mode Graph Map Network Operator Help

Current Band

Recent Contacts

Find

All

Score Statistics

Rec#	Call	Class	Sec	Date	Time	Bnd	Mde	Opr
456	K1R	5A	NH	2009/06/28	04:58:09	40	CW	WQM
455	W0GG	1A	CO	2009/06/28	04:57:05	40	CW	WQM
454	W4BTI	6A	WWA	2009/06/28	04:55:34	40	CW	WQM
453	K7LED	6A	WWA	2009/06/28	04:53:36	40	CW	WQM
452	K4FC	3A	NFL	2009/06/28	04:51:06	40	CW	WQM
451	N0TT	1E	MO	2009/06/28	04:50:14	40	CW	WQM
450	W0CIT	1A	KS	2009/06/28	04:49:10	40	CW	WQM
449	W1OP	3A	RI	2009/06/28	04:48:15	40	CW	WQM
448	NS1RA	5A	EPA	2009/06/28	04:44:57	40	CW	WQM

Total CW Contacts.....	300
Total Digital Contacts...	89
Total Phone Contacts...	67
Total QSO Points.....	845
QSOs / Hr (last 20 min)	33
QSOs / Hr (last 60 min)	32

Call

Class

Section

Sections Worked

On

5

7

0

1

3

CT RI
EMA VT
ME WMA
NH

DE MDC
EPA WPA

AR NTX
LA OK
MS STX
NM WTX

AZ OR
EWA UT
ID WWA
MT WY
NV AK

CO MO
IA NE
KS ND
MN SD

4

6

2
NNY NNJ
ENY SNJ
NLI WNY

AL SFL
GA WCF
KY TN
NC VA
NFL PR
SC VI

EB SDG
LAX SF
ORG SJV
SB SV
SCV PAC

8
MI WV
OR

9
IL WI
IN

Canada

NL SK
MAR AB
QC BC
ON NT
MB

Possible Duplicates

On

Band

40

Mode

CW

W0YI

2F

IA

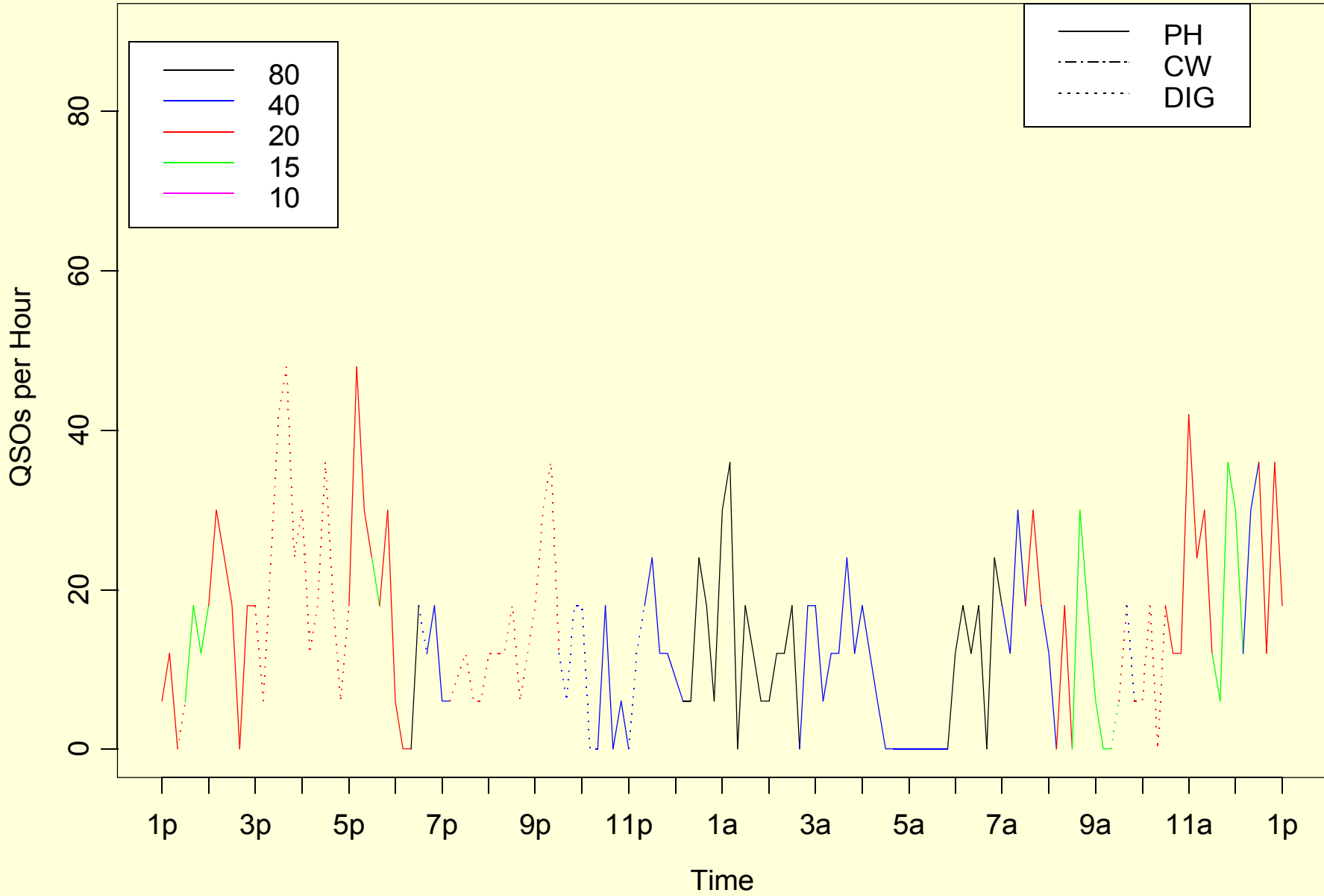
11:04:49 PM

05:04:49 UTC

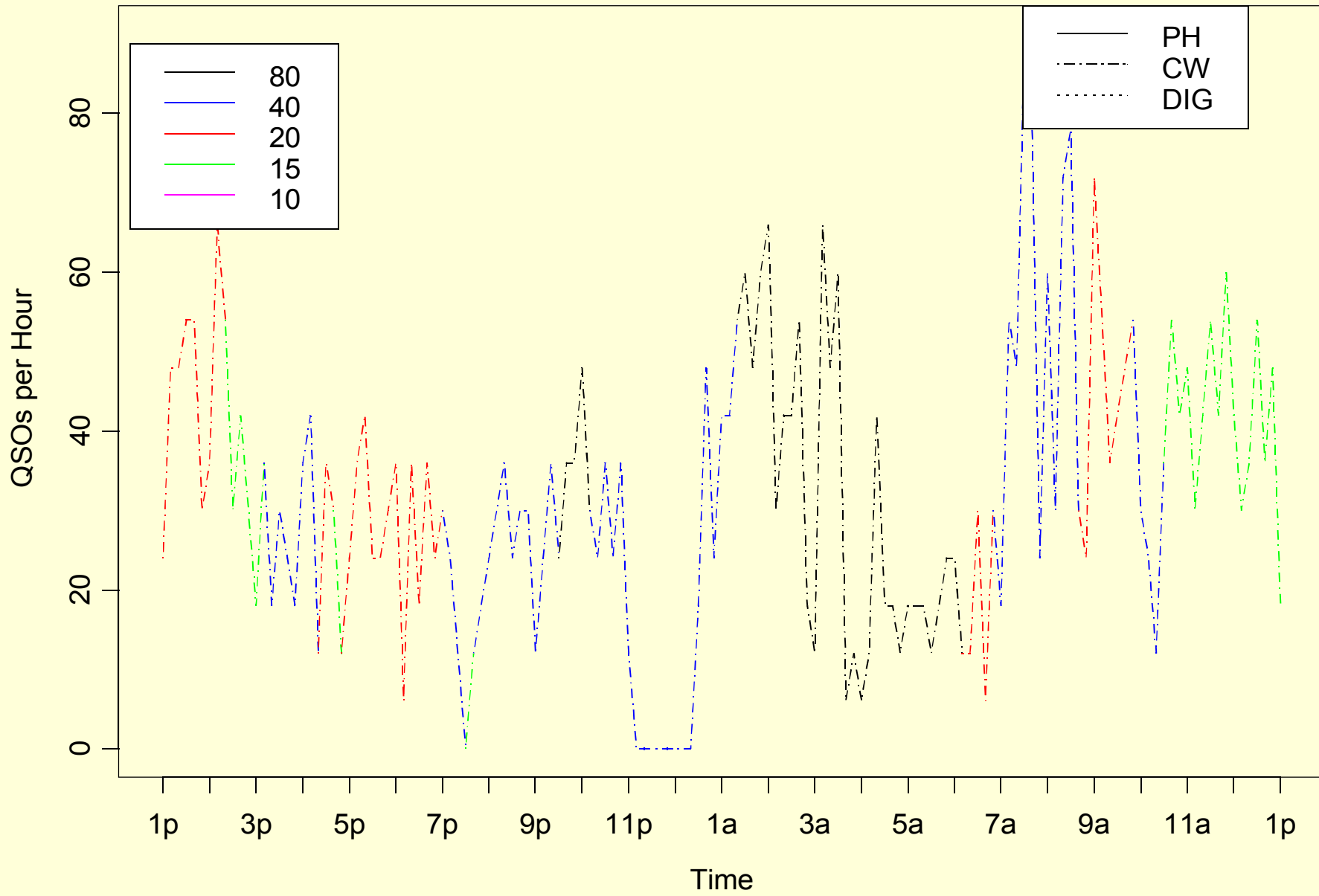
Bonus Points 2009

Emergency power (KC0JUO)	200
Public location (ND0D, AG3V)	100
Media Publicity (ND0D)	100
Public Information Table (ND0D, AG3V,K0KT)	100
NTS message to ARRL SM/SEC (AC0BG)	100
W1AW Field Day Message	100
Formal NTS messages handled (ND0D, W0NFL)	100
Satellite QSO completed	
Natural Power QSO's Completed	100
Site Visited by elected official	
Site Visited by served agency official	100
Educational Activity	100
GOTA + Coach QSO bonus	40
Youth Participation (4)	80
Web submittal of FD results (K0KT)	50

East



West



QSO Summary 2008

	CW		Digital		Phone	
	QSO	Power	QSO	Power	QSO	Power
160	0	150	0	150	0	150
80	97	150	0	150	22	150
40	434	150	0	150	99	150
20	155	150	0	150	87	150
15	20	150	0	150	20	150
10	5	150	0	150	0	150
6	0	150	0	150	0	150
GOTA	0	150	0	150	32	150
Totals	732	CW	0	Dig	260	Phone

QSO Summary 2009

	CW		Digital		Phone	
	QSO	Power	QSO	Power	QSO	Power
160	0	150	0	150	0	150
80	171	150	0	150	53	150
40	248	150	14	150	64	150
20	211	150	90	150	89	150
15	139	150	1	150	33	150
10	5	150	0	150	2	150
6	0	150	0	150	0	150
GOTA	0	150	0	150	32	150
Totals	774	CW	105	Dig	273	Phone

Summary FD Points 2009

Total CW QSO's: 769 X 2 = Total CW QSO points: 1538

Total Digital QSO's: 105 X 2 = Total Digital QSO points: 210

Total Phone QSO's: 273 X 1 = Total Phone QSO points: 273

Total QSO points: 2047 x 2 = 4094 for the power multiplier

Power Multiplier 150 Watts or less = 2

Bonus points 1270

Claimed Score: 5364

Missed NV and HI for WAS

2009 versus previous years

	2008	2009	2006	2007
Total QSO Points	2,852	3,204	3,492	4,094
Bonus Points	640	1,400	830	1,270
TOTAL POINTS	3,492	4,604	4,322	5,364

Special Thanks 1

- KI0Q for networking our computers in putting up the tower and Yagi
- AG3V and CARC, for bringing supplying ICOM 746s
- K0KT for supplying computers and interfaces
- WA0ROI, N0HR, AG3V for serving at GOTA coaches
- KD0IDL, N0HR, KB7VML, K0NJ, AI1P, WA0ROI for photographs

Special Thanks 2

- AC0BG, KI0Q, and K0KT for working the late/early shifts (midnight to 7am)
- WA0ROI and AI1P for the natural power bonus
- AG3V, AD0H, and ND0D for inviting special officials and securing permissions
- Frieda for cookies and sloppy Joe's that kept us nourished
- KC0JUO for bringing and testing the generator and making sure we had a photograph

Suggestions and Reminders for Field Day 2010

- Have one “captain” for each of the four stations (two main stations, GOTA, and VHF).
- Have separate doublet antennas on both 40 and 80-meter flat-top for both the CW and SSB stations.
- Put up two tribanders for 20, 15, 10 on separate towers, spaced as far apart as possible
- Continue and expand use of delegated responsibilities for particular bonus point tasks and documentation
- Continue to set up antennas on Friday evening. Check coax connectors on all coax runs and replace the bad ones **before** FD.
- Continue to test all antennas **before** FD and during setup. Use antenna analyzers at several stages of setup.
- Run a “free” VHF 2/6-meter cw/ssb station using Yagis. Extend the computer network for this station.

Suggestions and Reminders for Field Day 2010

- Continue to have a particular person(s) assigned to each planned bonus area.
- Continue to operate a CW station continuously. CW works much better with weak FD signals and count twice as much as Phone.
- Continue to have one station primarily CW and the other primarily SSB
- Check all computers for correct local and UTC time recording.
- The SSB/RTTY station should spend more time on RTTY if QSO can be made, especially Sat afternoon and late Sunday morning, as RTTY QSOs count twice as much as Phone contacts
- Have a dedicated photographer(s)
- Priority for newly-arriving GOTA visitors
- Recruit more young and long-term GOTA operators (i.e., those with the goal of making 20+ QSOs)
- Run the GOTA station into the evening, and perhaps start up again on Sunday morning, if recruits are found.