

# SCARC/CARC Field Day 2010

4H Building

Emergency Operations Center

Iowa State University Campus

Ames, IA

Class 2F

W0YL

W0ISU (GOTA)

# Participants

AC0BG, AI1P, AD0H, K0KT, KD0CSD,  
KC0JUO, KC0MKG, KC0SVG, KD0FHS,  
KD0GJD, KD0HJU, KD0HVJ, KI0Q, KN0R,  
N0CFL, N0HR, NV1K, WA0ROI, WB0FYB,  
Freida

# Friday-evening antenna setup crew gathering





KC0JUO, KN0R and K0KT  
visualizing antenna locations







N0CFL watching KN0R  
pumping up the launcher



KNOR launching,  
KOKT watching





KN0R reeling in while  
KC0JUO watches





AC0BG helping coax for the 80 and  
40-meter antennas





K0KT pulling out the coax







AC0BG tying the line to an antenna insulator

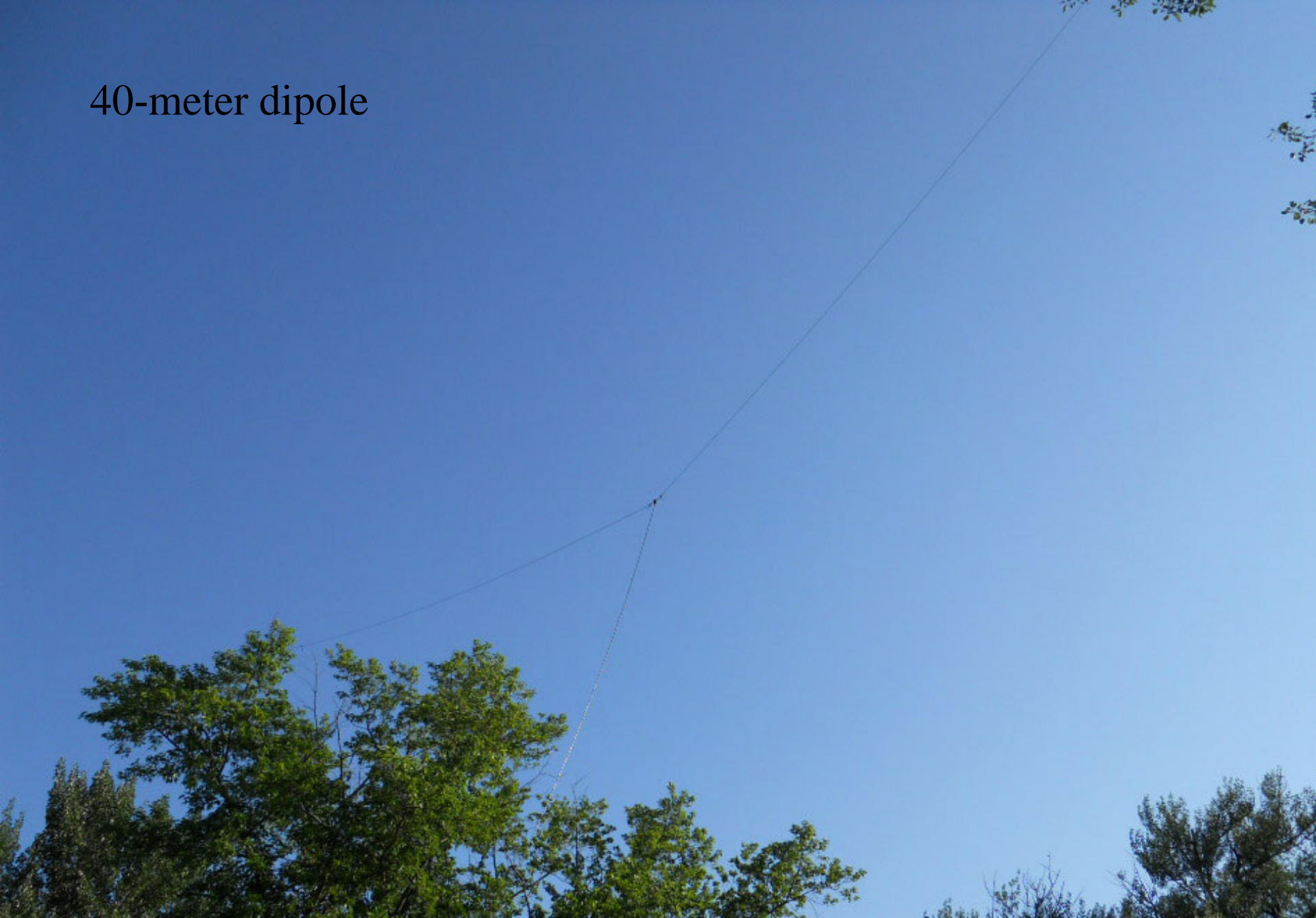


40-meter dipole





40-meter dipole





KI0Q putting up the West tower





KI0Q has another section up





KI0Q adjusting the gin pole



KI0Q adjusting the gin pole





Freida and AC0BG assembling sections for the East tower as it gets dark



AC0BG fitting tower sections together.  
KD0FHS and N0HR helping.

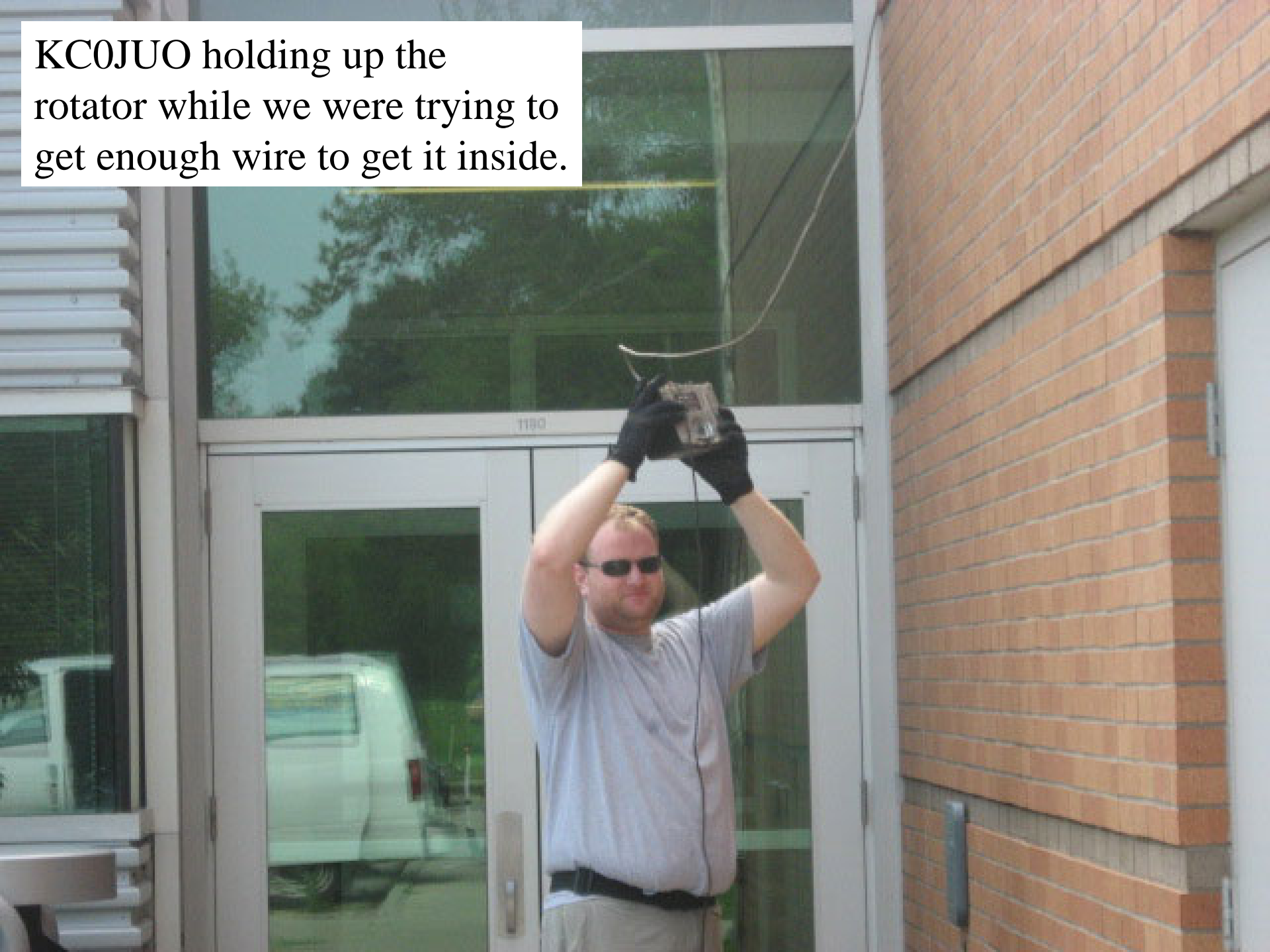




KN0R, N0HR, KI0Q, AC0BG, and NV1K hold up the East tower.



KC0JUO holding up the rotator while we were trying to get enough wire to get it inside.





KC0JUO and KD0HVJ trying to get enough wire to get it inside.



KI0Q and KD0HVJ working on  
the rotator cable





Some of the East-side antennas with the West tribander in the background.



East tribander and one half of the 80-meter inverted V





West tribander





West tribander and wire antennas for 40 and 80



# KC0JUO's emergency radio kit and the information table



Close-up of KC0JUO's emergency radio kit





# 6-pack antenna switch and filters



# GOTA

GET  
ON



THE  
AIR

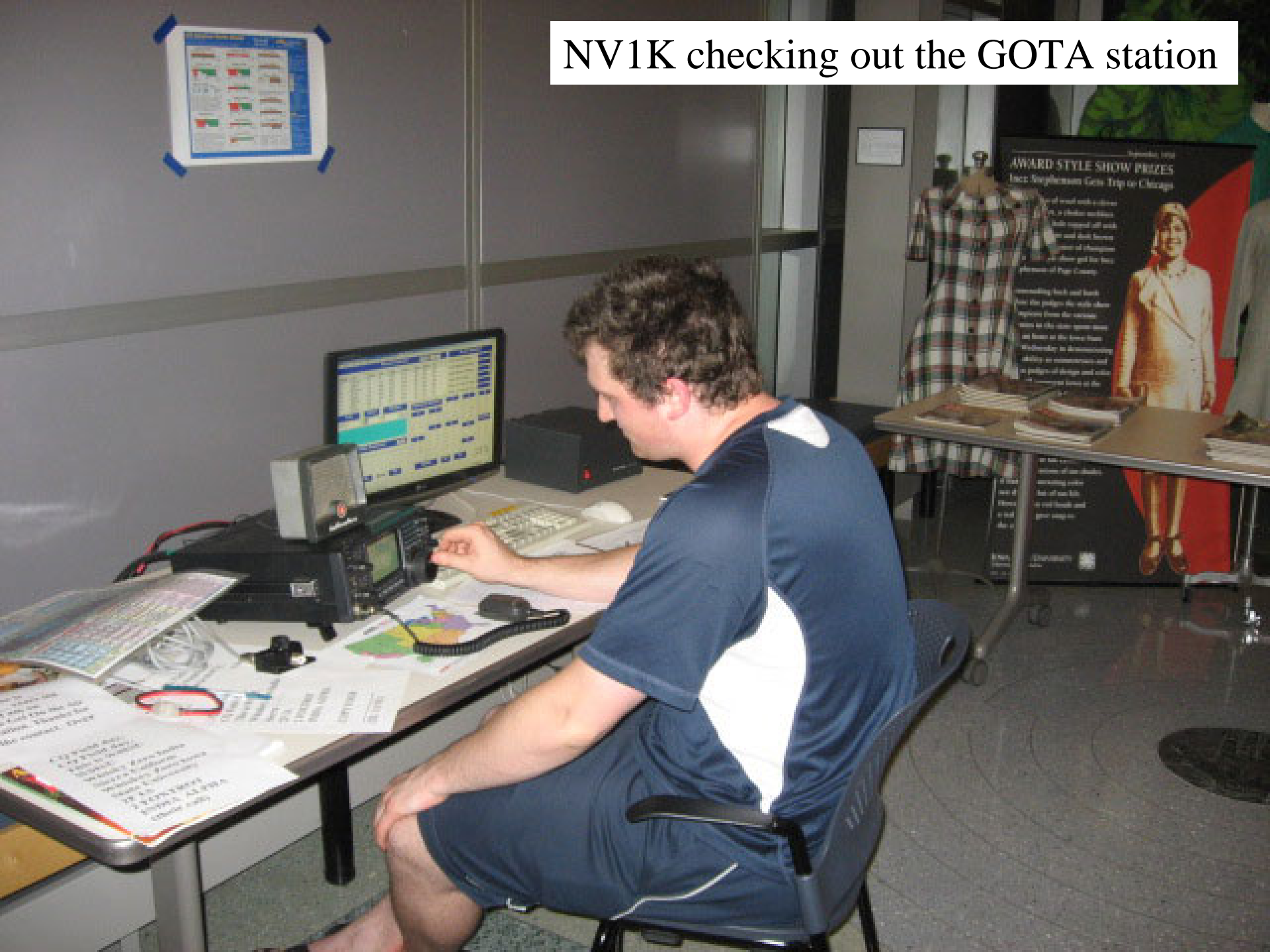
# FIELD DAY



KC0SVG's Icom 746 was the GOTA rig



# NV1K checking out the GOTA station





GOTA operators



KD0CSD coaching at the GOTA station





# Solar cells and batteries



AD0H and Ames Councilman Peter Orazem at the West station





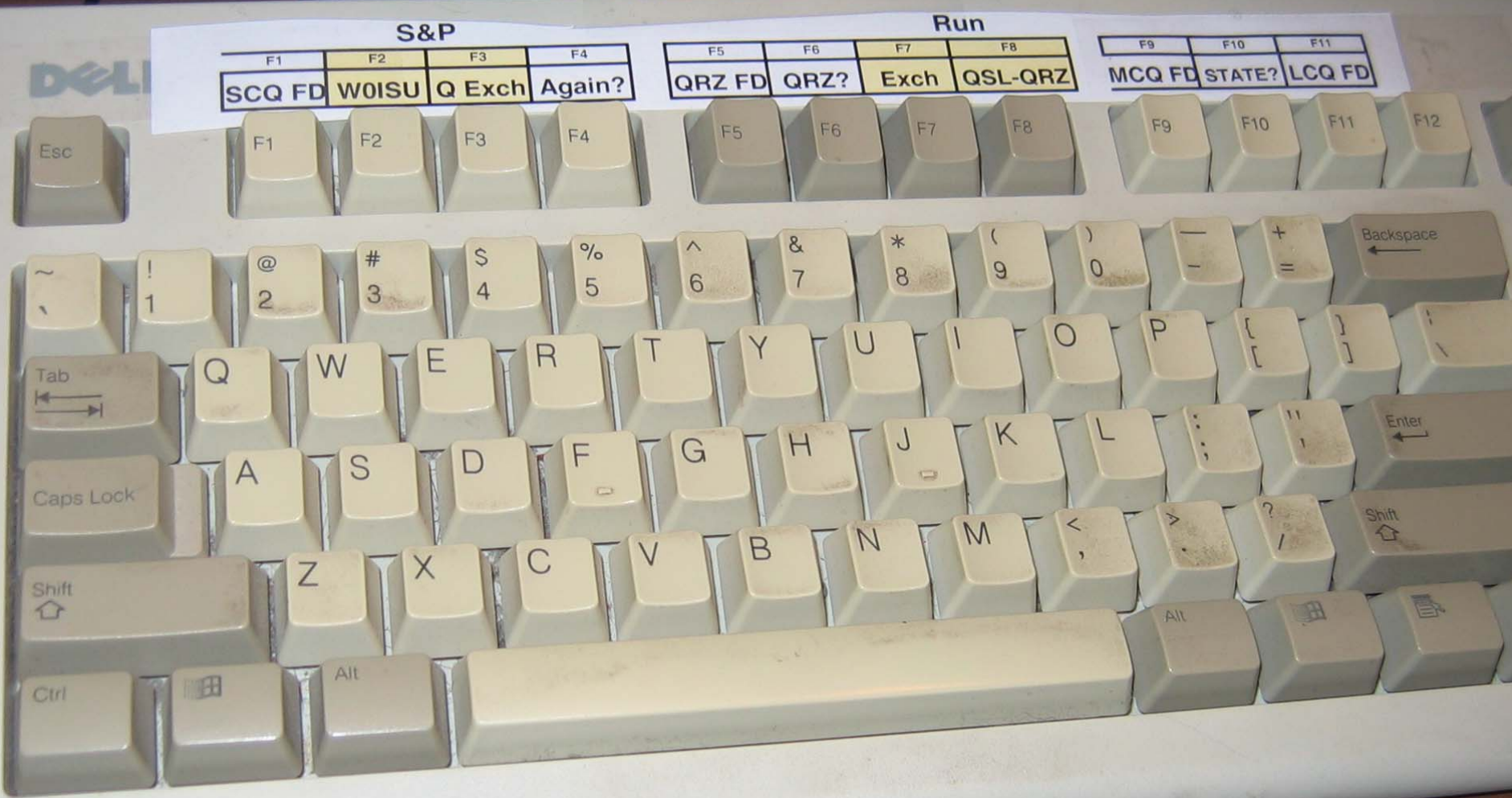
# K0KT operating CW



# K0KT using RIT to tune for answers to his CQ FD







Keyboard set up for semi-automatic CW QSOs

All Bands

### Recent Contacts

Find

Last 20

### Score Statistics

Rec#	Call	Class	Sec	Date	Time	Bnd	Mde	Opr
1227	W4BTI	4A	GA	2010/06/27	18:00:07	20	CW	WGM
1226	W1NY	7A	WMA	2010/06/27	17:58:49	20	CW	WGM
1225	K8NYG	1D	WV	2010/06/27	17:58:35	20	CW	WGM
1224	K4SWJ	1B	GA	2010/06/27	17:55:56	20	CW	WGM
1223	W88RTJ	1E	OH	2010/06/27	17:54:45	20	CW	WGM
1222	K87LJP	1B	WWA	2010/06/27	17:54:18	20	CW	WGM
1221	NT4A	1D	TN	2010/06/27	17:53:31	20	CW	WGM
1220	KH8J	2A	PAC	2010/06/27	17:52:45	20	CW	WGM
1219	K7YB	1B	MT	2010/06/27	17:51:53	20	CW	WGM

Total CW Contacts	757
Total Digital Contacts	20
Total Phone Contacts	450
Total QSO Points	2004
QSOs / Hr (last 20 min)	0
QSOs / Hr (last 60 min)	0

Call  Class  Section

Select a band and mode from the menu bar!

Possible Duplicates

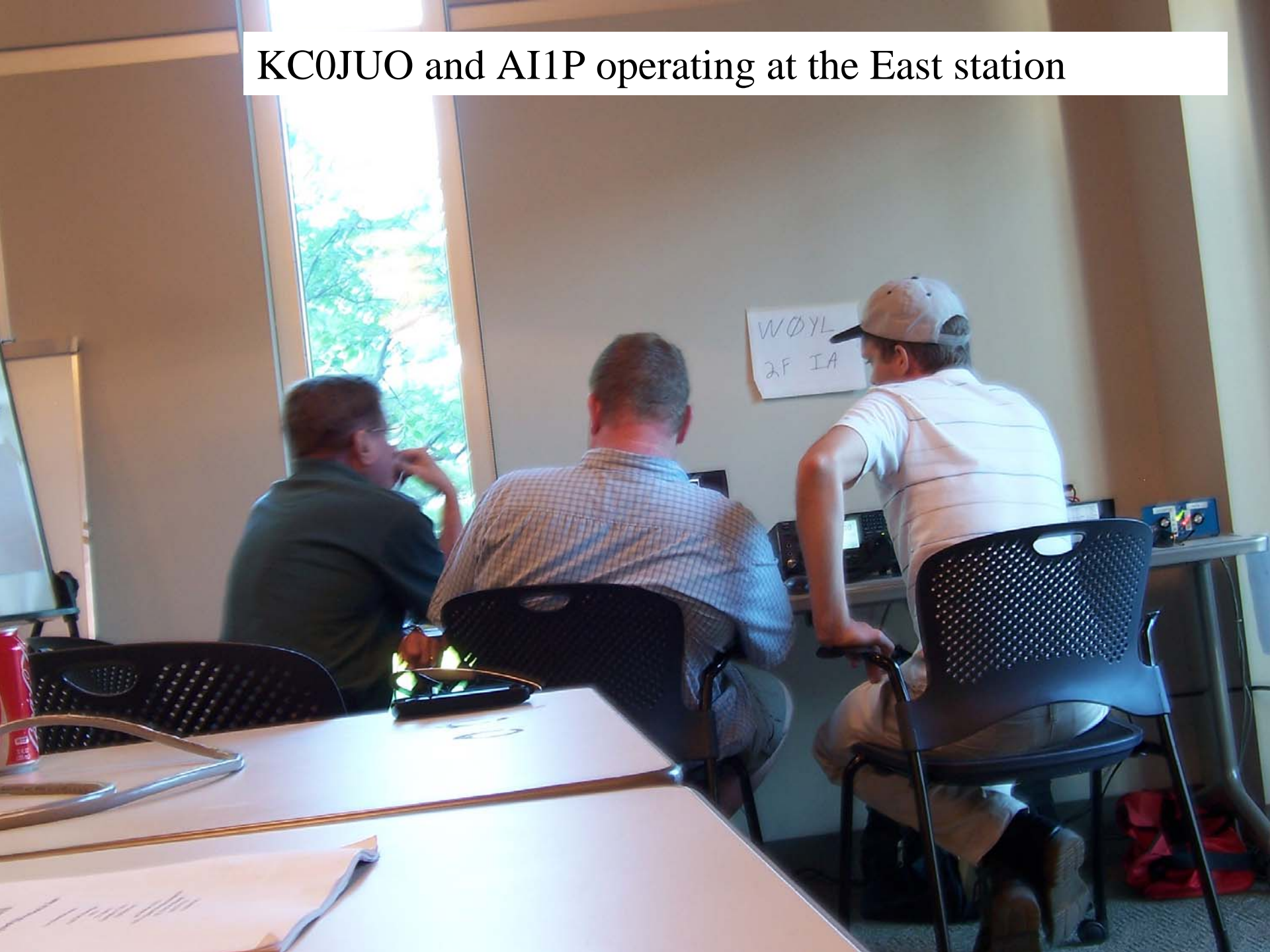
Sections Worked

<b>1</b>	<b>3</b>	<b>5</b>	<b>7</b>	<b>0</b>		
AR	NTX	AZ	OR	CO	SD	
LA	OK	EWA	UT	IA	NE	
MS	STX	ED	WWA	KS	ND	
NM	WTX	MT	WY	RI	SD	
NY	AK					
<b>2</b>	<b>4</b>	<b>6</b>	<b>8</b>	<b>Canada</b>		
AL	SFL	EB	SDG	NL	SK	
GA	WCF	LAX	SF	MB	WY	
NY	SNJ	ORG	SV	OH		
ENY	SNE	SB	SV			
NLI	WNY	SCV	PAC	<b>9</b>	ON	NT
	SC	VI		IL	WI	MB
				IN		

Band **80** Mode **CW** **WOYI** **2F** **IA** 5:30:12 AM 10:30:12 UTC



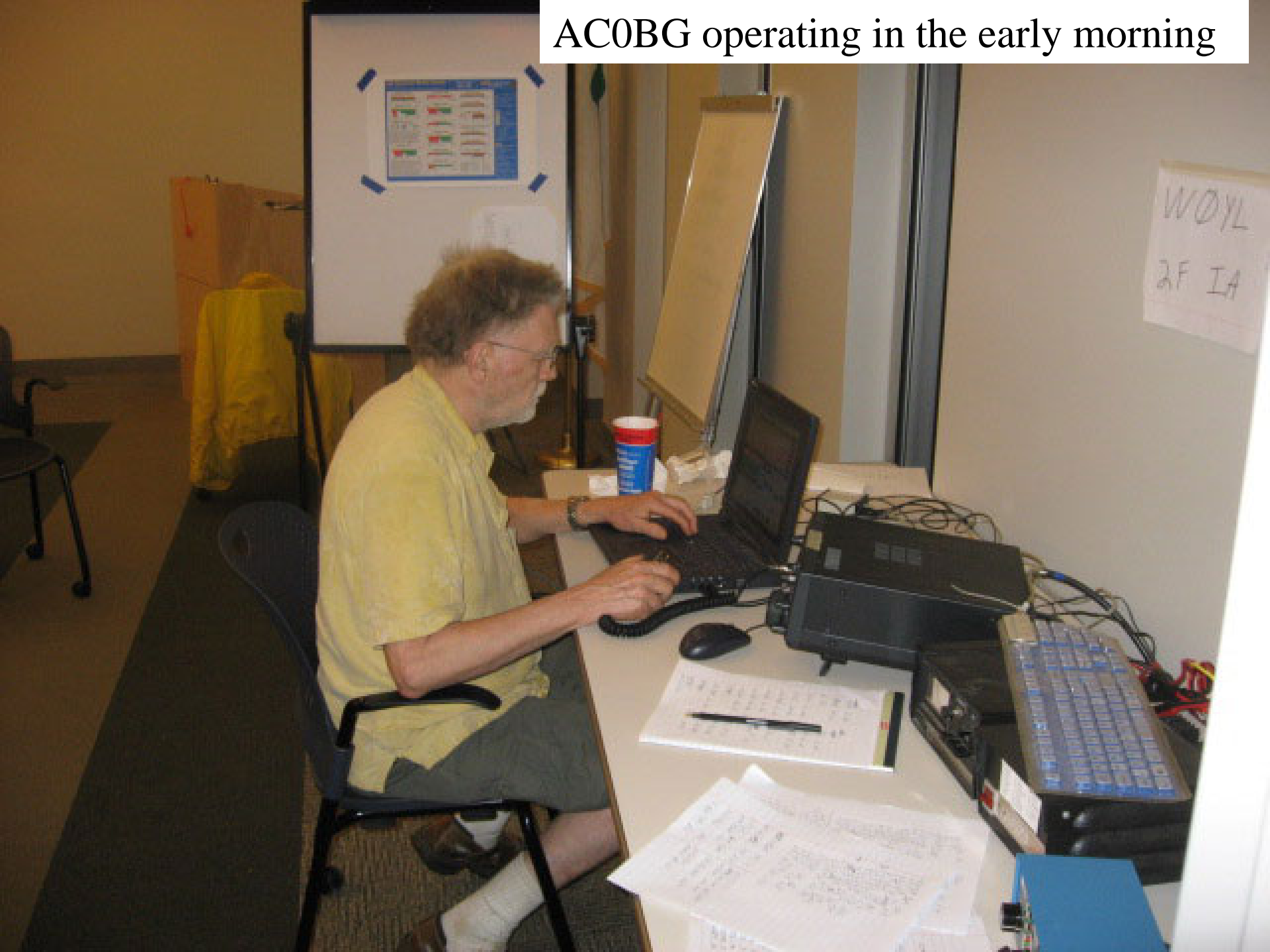
KC0JUO and AI1P operating at the East station







AC0BG operating in the early morning



Tower sections and tribander parts loaded into KC0JUO's truck.

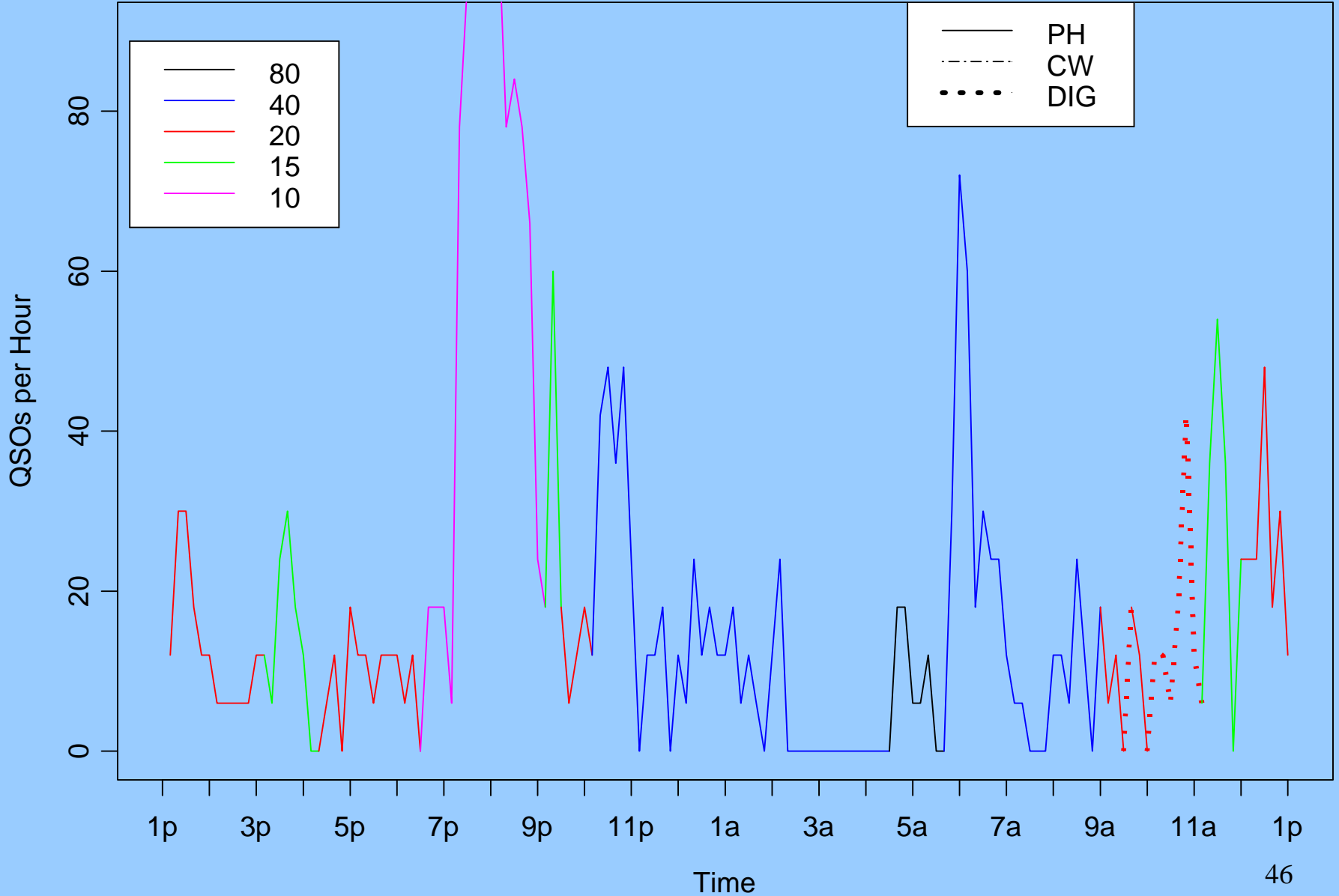




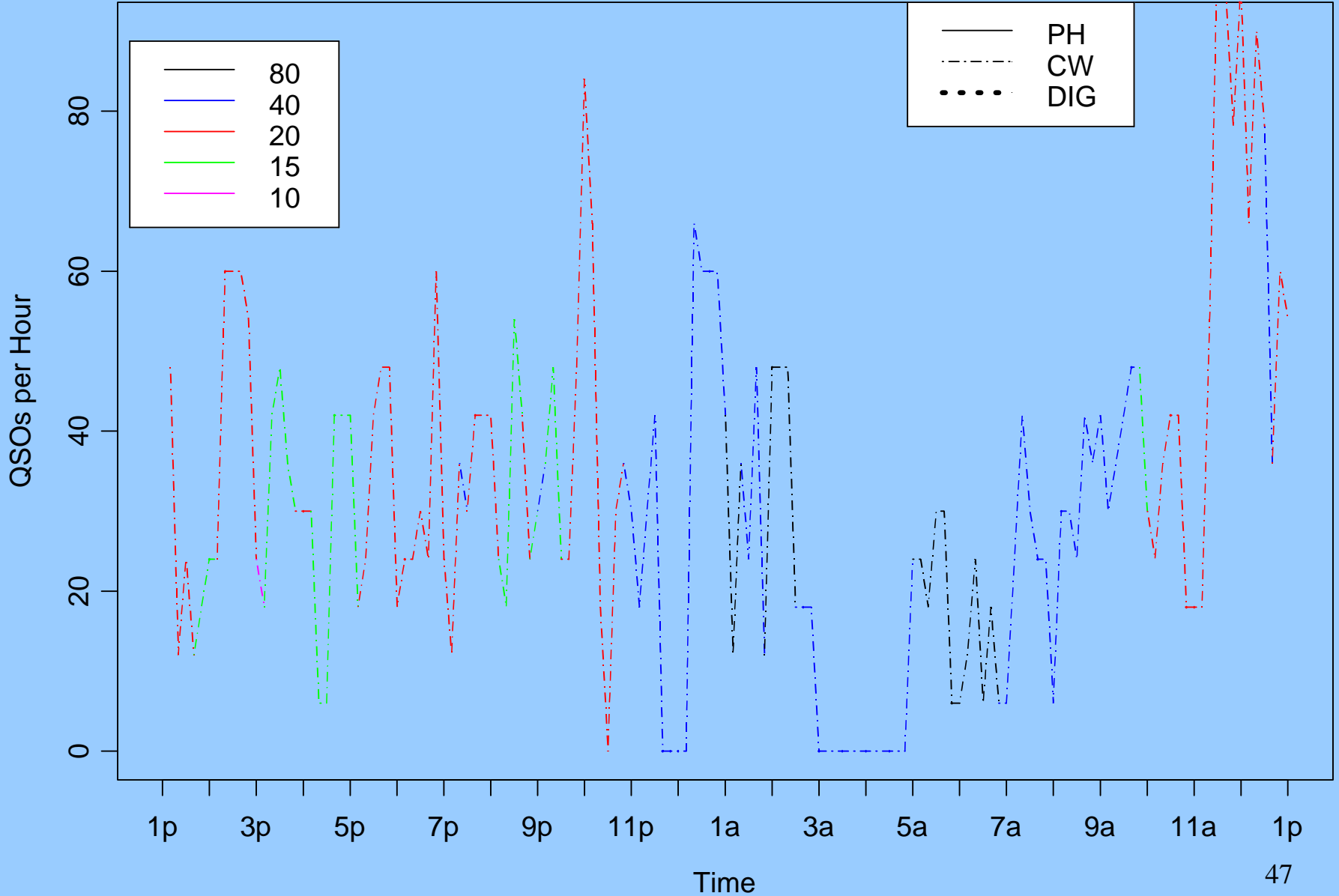
KC0JUO tying things down



# QSOs per Hour over 10-Minute Intervals East Station



# QSOs per Hour over 10-Minute Intervals West Station





# QSO Summary 2010

	CW		Digital		Phone	
	QSO	Power	QSO	Power	QSO	Power
160	0	150	0	150	0	150
80	67	150	0	150	10	150
40	203	150	0	150	130	150
20	377	150	20	150	89	150
15	109	150	0	150	52	150
10	1	150	0	150	169	150
6	0	150	0	150	0	150
<b>GOTA</b>	0	150	0	150	47	150
<b>Totals</b>	<b>757</b>	<b>CW</b>	<b>20</b>	<b>Dig</b>	<b>497</b>	<b>Phone</b>

# Bonus Points 2010

## 100% Emergency power

X Public location (AG3V)	100
X Media Publicity (ND0D)	100
X Public Information Table (KC0JUO)	100
X NTS message to ARRL SM/SEC (AC0BG)	100
X W1AW Field Day Message (WA0ROI)	100

## Formal NTS messages handled

## Satellite QSO completed 100

X Alternate Power QSO's Completed (KC0JUO, N0HR)	100
X Site Visited by elected official (KC0JUO)	100
X Site Visited by served agency official (KC0JUO)	100
X GOTA QSO bonus	40

## GOTA maximum QSO's achieved

X Youth Participation (3) (N0HR, KC0MKG, KC0CSD)	60
X Web submittal of FD results (K0KT)	50

# Summary FD Points 2010

Total CW QSO's: 757 X 2 = Total CW QSO points: 1514

Total Digital QSO's: 20 X 2 = Total Digital QSO points: 40

Total Phone QSO's: 502 X 1 = Total Phone QSO points: 502

Total QSO points: 2056 x 2 = 4112 for the power multiplier

Power Multiplier 150 Watts or less = 2

Bonus points 910

Claimed Score: 5022

Worked WAS and most Canadian provinces



# 2010 versus previous years

	2006	2007	2008	2009	2010
Total QSO Points	2,852	3,204	3,492	4,094	4,112
Bonus Points	640	1,400	830	1,270	1,050
<b>TOTAL POINTS</b>	<b>3,492</b>	<b>4,604</b>	<b>4,322</b>	<b>5,364</b>	<b>5,172</b>

# Special Thanks 1

- AC0BG, AI1P, KN0R and others for getting wires into the air
- KI0Q for putting up two towers and tribanders
- KI0Q for networking our computers
- KC0SVG and CARC for supplying ICOM 746s
- K0KT for bringing filters and computers
- KC0SVG, KC0CSD, and N0HR for serving at GOTA coaches
- N0HR, AD0H and K0KT for photographs
- AI1P for being the captain of the SSB/RTTY station
- K0KT for being the captain of the CW station
- KD0CSD & KC0SVG for being the captains of the GOTA station

# Special Thanks 2

- AC0BG, WB0FYB, KI0Q, KC0SVG, N0HR, AD0H, and K0KT for working the late/early shifts (10pm to 7am)
- N0HR for bringing solar panels.
- AG3V securing permissions
- KC0JUO for inviting special officials
- AD0H and Frieda for drinks and food
- KC0JUO for bringing and testing the generator and making sure we had a photograph



# Suggestions for Field Day 2011

- Display the SCARC banner where it can be seen.
- Use rope to support wire antennas in trees, making it easier to raise and lower.
- Continue to use one or two a tribanders for 20, 15, 10. They help very much.
- Continue to have one “captain” for each of the four stations (two main stations, GOTA, and VHF). Continue to share antennas with GOTA.
- Continue and expand use of delegated responsibilities for particular bonus point tasks and documentation
- Check coax connectors on all coax runs and replace the bad ones *before* FD.
- Test all antennas *before* FD and during setup. Use antenna analyzers at several stages of setup. This should be done before operation starts (Antenna analyzers do not work when there is strong RF in the area).
- Run a “free” VHF 6-meter station using a Yagi. Perhaps extend the computer network for this station.

# Suggestions for Field Day 2011

- Do a better job of keeping the visitor log.
- Continue to operate a CW station continuously. CW works much better with weak FD signals and count twice as much as Phone.
- Implement RTTY on both the Phone and GOTA stations. RTTY QSOs count twice as much as Phone contacts
- Priority for newly-arriving GOTA visitors
- Recruit more young and long-term GOTA operators (i.e., making 20+ QSOs), perhaps in off hours